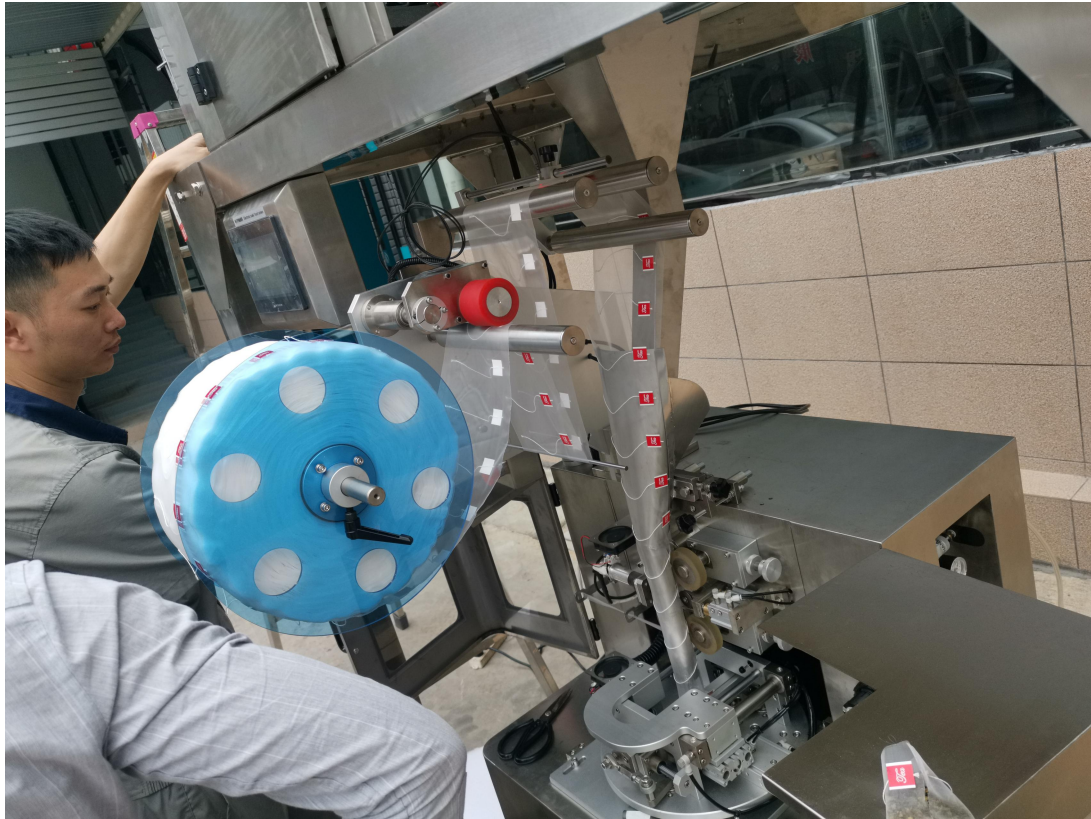


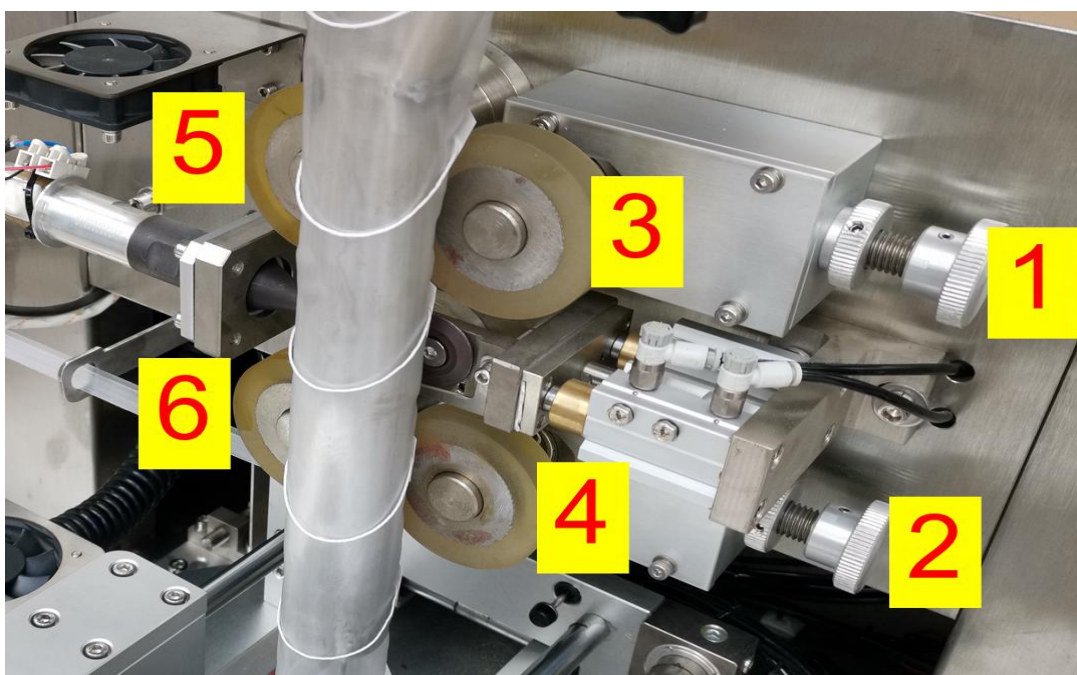
1. Install the triangular bag roll film, as shown in the figure



2. Tighten the screws 1 and 2 to clamp the roll film, and then turn the four drive rubber wheels 3/4/5/6 by hand respectively.

To prevent the rollers from not being really clamped due to the misalignment of the internal gears, resulting in loosening during work.

After turning the four driving rubber wheels, if there is any wheel that is not tightened, tighten the screws 1 and 2 again to clamp the driving rubber wheels.

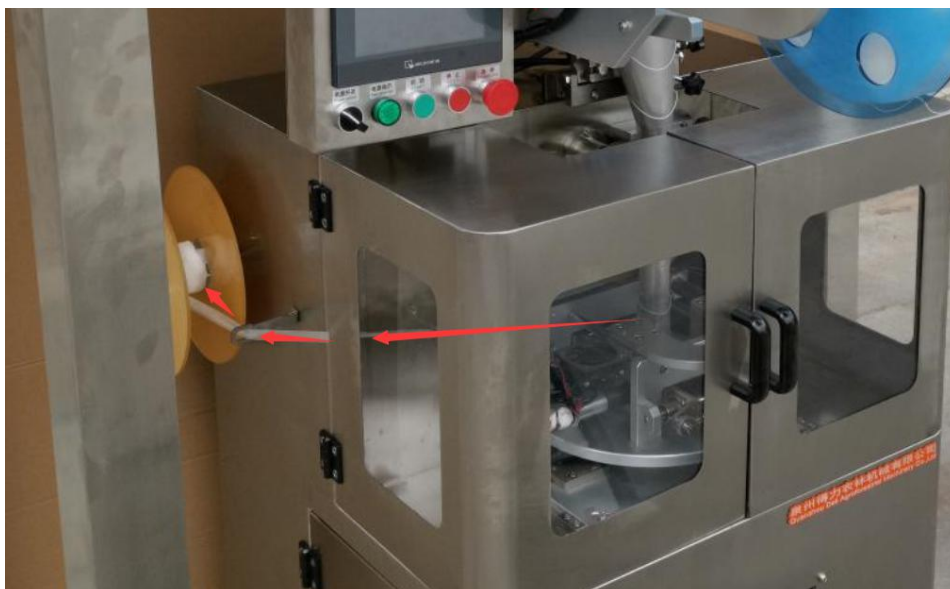


3. After the bag is installed, confirm that the two sides are aligned, and ensure that the center line of the bag is on the same plane, otherwise the bag may fall off during work.



4. After installation, click the Film Jog button, let the bag jog and pull, and check whether the machine can work normally.

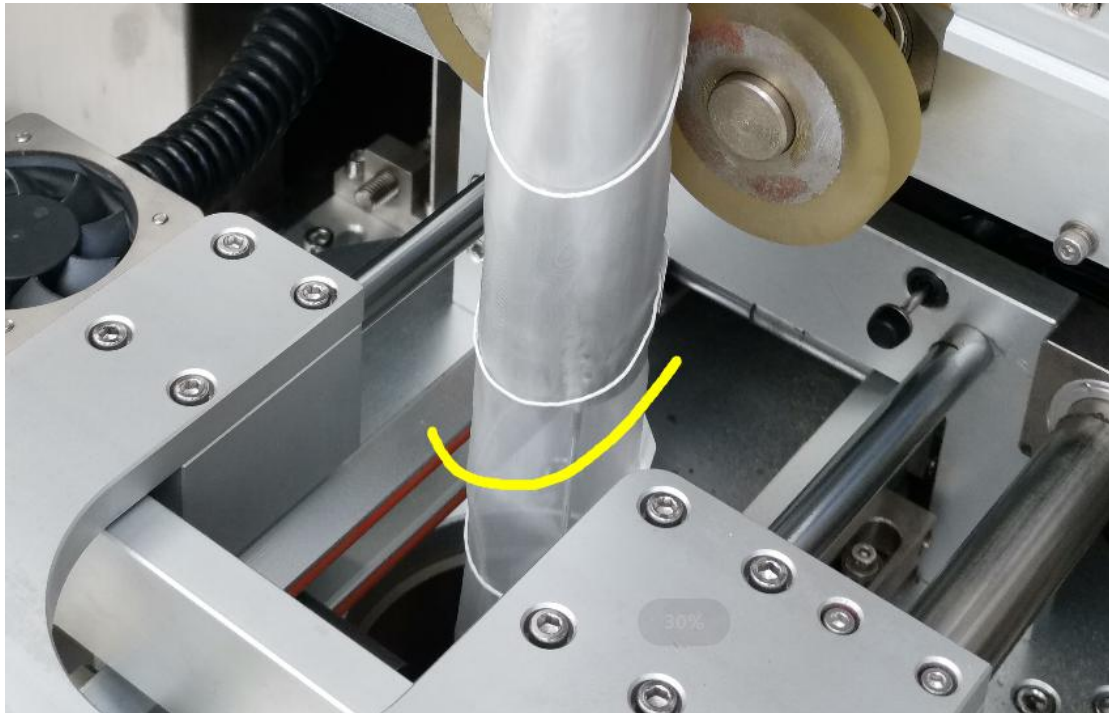
At the same time, because the ultrasonic wave will cut the bag, extend the cut bag to the side and install it on the "waste wheel" on the side



5. Click Film Jog again to adjust the position of the bag.

Align the center of the two labels with the cut of the bottom ultrasonic sealer.

Make sure that when the bag is cut, it is cut in the middle of the two labels



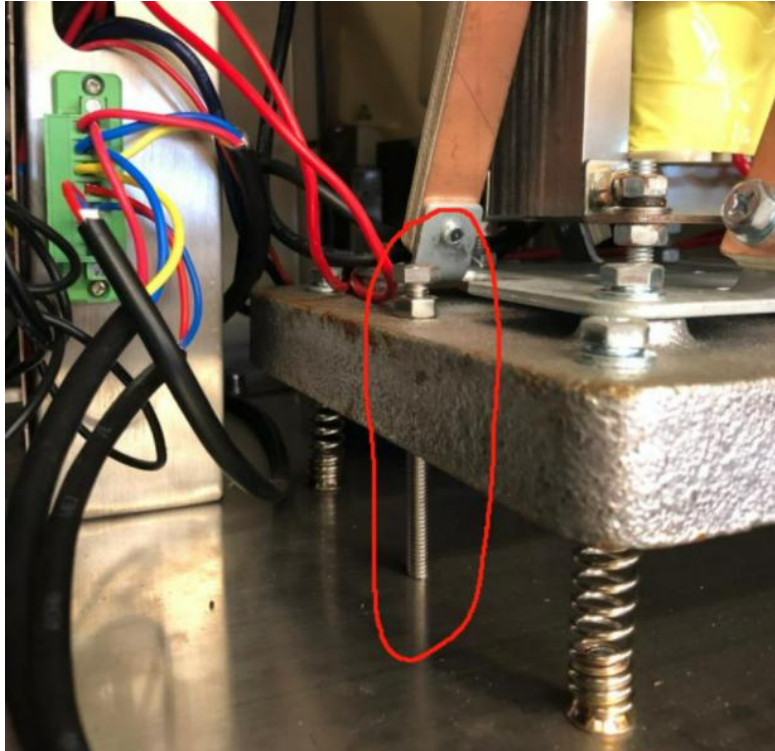
6. After the adjustment, start to adjust the label sensor, first align the sensor to the blank position, click SET, then align the cursor with the label on the roll film, and click SET again to complete the adjustment. The adjusted red light should shine on the center of the label.



7. Now start adjusting the scale.

In order to prevent the electronic scale from being damaged during transportation, screws are installed to fix it.

So after removing all the fixing screws, the electronic scale can work.



8. Function settings of the electronic scale.

The following is the corresponding explanation, set according to your actual needs.

PKGP - discharge together, meaning: when all scale weigh arrive, the discharge door will open together (all scale's door will open together)

PKLP - Sequential discharging by group, meaning : The discharging sequence is GROUP1 - GROUP2 - GROUP1 - GROUP2

ASYN - Sequential discharging, meaning : The discharging sequence is scale1-scale2-scale3-scale4-scale1-scale2-scale3-scale4-scale1



9. Then you can try to start the machine, in the order of 1 OFF 2 OFF 3 ON 4 START as shown in the figure;

Don't pack the tea first, test whether the machine can pack the triangular bag normally, if it can pack normally, you can turn 2 FILLING ON,

if it cannot be packaged normally, find the corresponding problem and readjust the machine.

